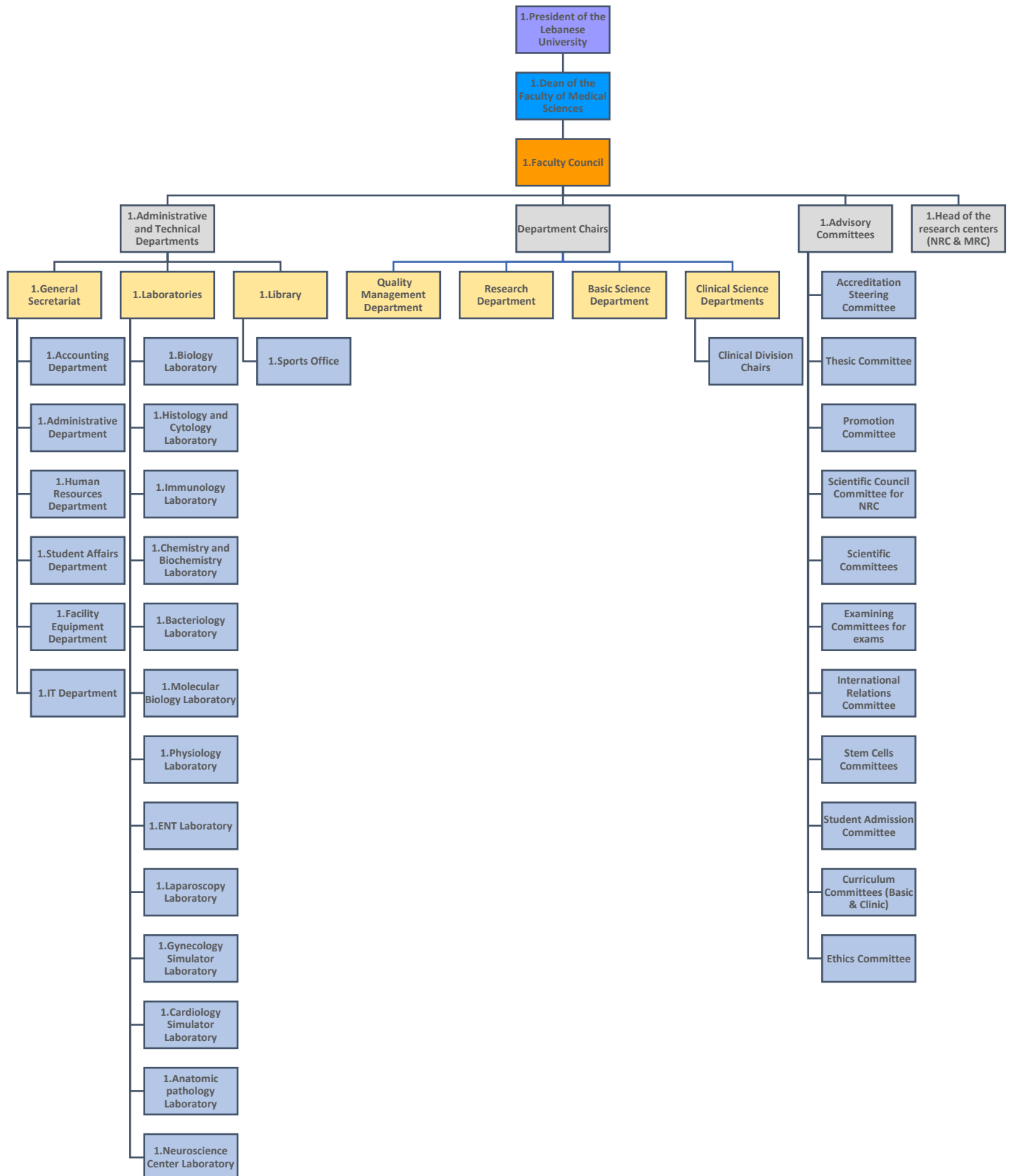


Faculty of Medical Sciences at the Lebanese University Organigrammes

Below are two organigrammes for the governance structure of the LU-FMS:

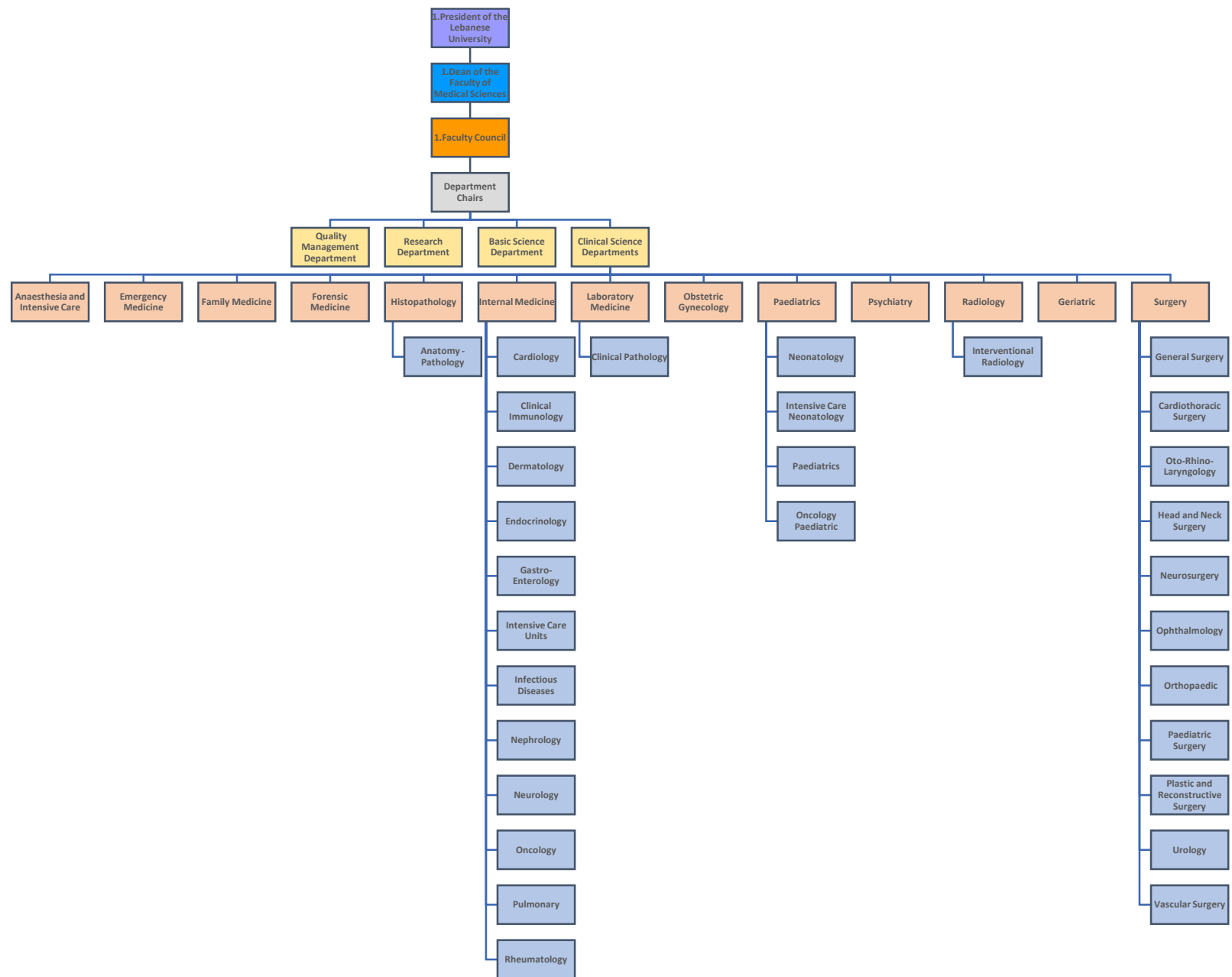
1. The Administrative Organigramme
2. The Medical Organigramme



Administrative Organigramme for the governance structure of the Faculty of Medical Sciences at the Lebanese University.

The Administrative and Medical organigrammes include:

1. President of the Lebanese University
2. Dean of the Faculty of Medical Sciences
3. Faculty Council
4. General Secretariat
5. Head of the research centers (Neuroscience Research Center, Medical Research Center)
6. Department Chairs including : Clinical Science Departments (Anaesthesia and Intensive Care, Emergency Medicine, Family Medicine, Forensic Medicine, Histopathology, Internal Medicine, Laboratory Medicine, Obstetric Gynecology, Paediatrics, Psychiatry, Radiology, Geriatric, Surgery), Basic Science Department, Research Department, and Quality Management Department
7. Division Chairs including: Anatomy, Cardiology, Cardiothoracic Surgery, Clinical Immunology, Dermatology, Endocrinology, Gastro-Enterology, General Surgery, Intensive Care Neonatology, Intensive Care Units, Interventional Radiology, Neonatology, Nephrology, Neurology, Neurosurgery, Oncology, Oncology Paediatric, Ophthalmology, Orthopaedic, Oto-Rhino-Laryngology, Paediatric Surgery, Plastic and Reconstructive Surgery, Pulmonary, Rheumatology, Urology, Vascular Surgery, and Infectious Diseases.
8. Faculty Members and Teaching Staff
9. Advisory Committees including Accreditation Steering Committee, Temporary Committee, Thesis Committee, Promotion Committee, Scientific Council Committee for the Neuroscience Research Center, Scientific Committees, Examining Committees for exams, International Relations Committee, Stem Cells Committees, Student Admission Committee, Curriculum Committees, and Ethics Committee.
10. Administrative and Technical Departments: General Secretariat, Accounting Department, Administrative Department, Human Resources Department, Student Affairs Department, Facility Equipment Department, IT Department and Administrative and Technical Staff
11. Laboratories: Biology Laboratory, Histology and Cytology Laboratory, Immunology Laboratory, Chemistry and Biochemistry Laboratory, Bacteriology Laboratory, Molecular Biology Laboratory, Physiology Laboratory, ENT Laboratory, Laparoscopy Laboratory, Gynecology Simulator Laboratory, Cardiology Simulator Laboratory, Anatomic pathology Laboratory, Neuroscience Center Laboratory.
12. Library
13. Students



Medical Organigramme for the Faculty of Medical Sciences at the Lebanese University

LU-FMS Department

The Medical School of the Lebanese University includes 15 departments:

1. Anaesthesia and Intensive Care Department
2. Emergency Medicine Department
3. Family Medicine Department
4. Forensic Medicine Department
5. Basic Science Department
6. Histopathology Department
7. Internal Medicine Department
8. Laboratory Medicine Department
9. Obstetric Gynecology Department
10. Paediatrics Department
11. Psychiatry Department
12. Radiology Department
13. Geriatric Department
14. Research Department
15. Surgery Department

LU-FMS Division

The Medical School of the Lebanese University includes the following 27 divisions:

1. Anatomy
2. Cardiology
3. Cardio-Thoracic Surgery
4. Clinical Immunology
5. Dermatology
6. Endocrinology
7. Gastro-Enterology
8. General Surgery
9. ICN, Intensive Care Neonatology
10. ICU, Intensive Care Units

11. Interventional Radiology
12. Neonatology
13. Nephrology
14. Neurology
15. Neurosurgery
16. Oncology
17. Oncology Paediatric
18. Ophthalmology
19. Orthopaedic
20. Oto-Rhino-Laryngology
21. Paediatric Surgery
22. Plastic and Reconstructive Surgery
23. Pulmonary
24. Rheumatology
25. Urology
26. Vascular Surgery
27. Infectious Diseases